



YHA (England and Wales)

Youth Hostel Profile

compiled by the Association's volunteer archivist, John Martin, 2020-01-01

Llwyndafydd Youth Hostel 1949 only, or 1949 to 1950

Neuadd Farm, Llwyndafydd, Synod Inn, Llandyssul, Cardiganshire

Historic County: Cardiganshire

YHA Region: South Wales

GR: SN 369558

After the war, YHA South Wales Region was keen to expand towards the Cardiganshire coast. On 3rd February 1948, an old stone farmhouse at Neuadd Farm, Llwyndafydd, was purchased for £4,000 and a grant from the Ministry of Education enabled conversion work to proceed. The property was vested in the YHA Trust. The hostel opened the following year, probably on 1st May. The warden was Mrs Jones.

The June 1949 edition of the *South Wales Hosteller*, an impressively produced though inevitably short-lived YHA letterpress regional magazine, gave an account of the preparations to open the hostel:

Easter at Llwyn Dafydd

When my friends heard that I was spending the Easter holiday on a working party, they thought I was crazy. When I came back and told them how I enjoyed it and what we had done, their opinion was unchanged. Yet the five of us who went to prepare Llwyn Dafydd hostel for opening on May 1st, left on Tuesday with a real sense of satisfaction and joy in a job well done.

I must confess that the sight of the long dusty cobwebs hanging from the rafters of the disused loft which was to be the men's dormitory filled me with misgivings. (I never did like spiders). But once the dirt was removed, two of us started distemping the walls while others repaired window frames, put in a skylight, patched holes in the floor and walls, and creosoted the beams, etc. The arrival of the first two hostellers on Saturday night precipitated the erection of beds, before the room was really ready, but we were glad to see them, although the hostel was not officially open.

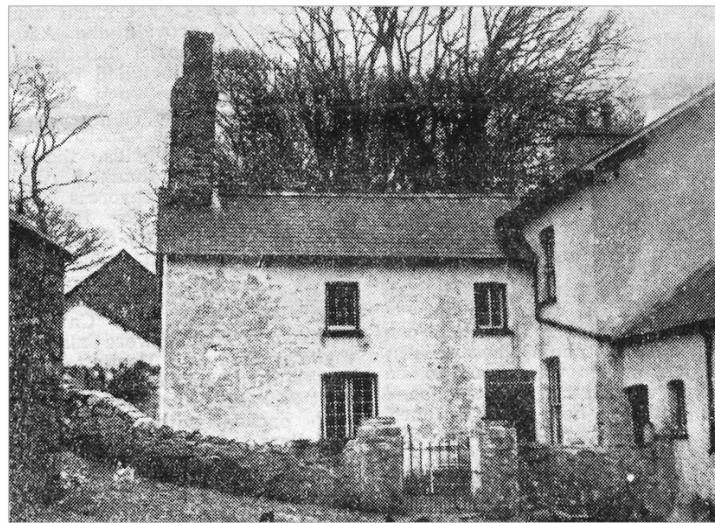
The women's dormitory, which is in the farmhouse itself, and the self-cookers' kitchen, seemed to be soon prepared. We were by now working more easily, although arms ached and knees were sore from the unaccustomed scrubbing of wooden floors.

On Monday, we allowed ourselves time off to explore some of the paths to Cwm Tydu and along the cliffs towards New Quay. The farmhouse is beautifully situated, and those who found it and persuaded Mr and Mrs Jones to become wardens of our first hostel in South Cardiganshire may well be pleased with their achievement. The working party would like to say a sincere thank you to all at Neuadd Farm for their co-operation and assistance over the Easter week-end. The creation of a hostel in this lovely village is a great event, and the local inhabitants are looking forward with pleasure to the visits of the hostellers. There is no doubt that Llwyn Dafydd will be one of these hostels you long to re-visit, and that Mr and Mrs Jones will make many friends.

YHA did not have much luck in the immediate post-war years in establishing new hostels in West Wales. Llwyndafydd hostel was closed by early 1950 as, for personal reasons, Mrs Jones had to leave her farm shortly after the end of February. All the hostel use may have been confined to a few short months in 1949; the *South Wales Hosteller* magazine of September 1949 announced that the availability of Llwyndafydd during the winter months had not yet been definitely fixed, but it would remain open at least until 30th of that month. Only 13 bednights were recorded after that date, though the hostel was not officially closed until 28th February 1950. In spring 1950 members were advised through YHA's *Rucksack* magazine that no bookings were being taken.

<i>Overnights – inclusive periods each year as follows</i>									
<i>1949-1950: previous Oct to Sept</i>									
<i>1940</i>	<i>1941</i>	<i>1942</i>	<i>1943</i>	<i>1944</i>	<i>1945</i>	<i>1946</i>	<i>1947</i>	<i>1948</i>	1949
...	891
1950	<i>1951</i>	<i>1952</i>	<i>1953</i>	<i>1954</i>	<i>1955</i>	<i>1956</i>	<i>1957</i>	<i>1958</i>	<i>1959</i>
13

YHA sold the property on the 28th September 1951 for the original purchase amount. A curiosity is the conflicting descriptions of owner-occupied accommodation hostel and freehold purchase by YHA.



1



2



3

1: the only known illustration of Llynndafydd youth hostel, from South Wales Hosteller magazine, June 1949 (YHA Archive);
2&3: Llynndafydd Farm, rear and front, as photographed by the author with the kind permission of Llinos Young in August 2015. For many years a Neuadd Farm Holiday Cottages business has operated from the cluster of farm buildings

© John Martin, 2020. YHA Profiles are intended to be adaptable in the light of new materials gained by YHA Archive.